

MISSION STATEMENT

To provide loving and caring services to children and families dealing with a range of disorders including Autism Spectrum Disorders (ASD) in a manner consistent with individual/family strengths, needs, and choices in order to improve the quality of life of every child and family we serve.



Apex Network Consolidated

5310 Old Court Road, Suite 102
Randallstown, MD 21133

Phone: 443-540-3337, 443-405-0099

Fax: 443-405-0119

Email: chikamonu@aol.com

SERVICES PROVIDED

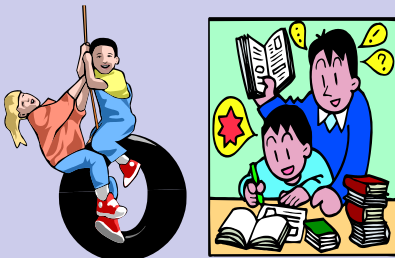
- ◆ Family Training - Waiver service
- ◆ Adult Life Planning—Waiver
- ◆ Respite Care - Waiver service
- ◆ IISS - Waiver service
- ◆ Therapeutic Integration
- ◆ Psychosocial assessments
- ◆ Evaluations
- ◆ Counseling
- ◆ Behavior interventions
- ◆ Behavior treatment planning
- ◆ Skills training (individual and group)

CONTACT PERSON

CHIKA MONU, PhD, LCSW-C

Phone: 443-540-3337, 443-405-0099

Fax: 443-405-0119



Children are served at home and in the community

Apex Network
Consolidated

Social Health Services,
Training, and
Consulting Services



Working together to
build a safe, secure,
and healthful home
and community setting

5310 Old Court Road, Suite 102
Randallstown, MD 21133

Telephone: 443-540-3337,
443-405-0099

Fax: 443-405-0119

WHO WE ARE

Apex Network Consolidated is an approved provider of Autism Waiver Services. We are a licensed, insured, and bonded social health services agency. We engage in the evaluation, diagnosis, and treatment of psychosocial conditions and mental disorders. We provide training, counseling, and behavior interventions.



Brain storming and using collective expertise of team members to work for our clients

Autism Waiver Services that we provide include respite care, intensive individual support services (IISS), therapeutic integration, adult life planning, and family training.

We believe in working cooperatively with clients and their families to ensure a safe, secure, and healthful home and community setting. We emphasize the strengths perspective and the principles of empowerment in delivering services.

FAMILY TRAINING

Family training services are provided either in the home or in the agency office. Professionals licensed in the State of Maryland as social workers, special education teachers, occupational therapists, or physical therapists provide quality services in training families in treatment regimens, behavior intervention and modeling, skills training, and training on use of equipment. Family trainers develop behavior intervention plans based on a multi-variable and multi-method functional assessment, personal interview with waiver participant/family, review of IEP, review of speech/language assessments/other educational assessments, preferred events (self and caregiver report), and semi-structured interview.

They provide training to the family and family support worker on plan implementation and documentation. They also provide ongoing supervision of the family support worker working in the home.

RESPITE CARE SERVICES

Respite care service involve short-term care because of the absence of or need for relief of the client's family who normally provides the care. Our respite care family support workers assist in or provide activities of daily living including nourishment, personal hygiene, and grooming. They also provide assistance in day-to-day activities including homework, problem solving, extra curricula activities such as visits to library, ball games, after school programs, and doctor's office visits.

INTENSIVE INDIVIDUAL SUPPORT SERVICES

Intensive individual support services involve intensive one-on-one interventions to assist in the care, treatment, and habilitation of clients. Services are provided in the clients' home or in the community. Intensive individual support workers in addition to assisting in and/or providing activities of daily living also serve as instructional technician, therapeutic aide, bus aide, or interpreter.



Safe and secure home setting

THERAPEUTIC INTEGRATION

Therapeutic integration is an after school program geared towards integrating therapies with the goal of engaging clients in activities with other children to teach/model, improve, and/or maintain skills. Clients engage in activities in therapy areas such as play therapy, music therapy, art therapy, sensory integration therapy, movement/dance therapy, and social skills/daily living training.

Therapeutic Integration sites:

100 Winters Lane, Catonsville, MD 21228

5310 Old Court Road Suite 102, Randallstown, MD 21133

ADULT LIFE PLANNING

This service is geared towards working with waiver participants and families to develop a treatment plan that will incorporate principles of self determination, Person Centered Planning, and Circles of Support. The goal is to provide assistance, support, and necessary information for a smooth transition from the child centered developmental model to the adult developmental model.



**APEX NETWORK
CONSOLIDATED**

5310 Old Court Road, Suite 102
Randallstown, MD 21133

Phone: 443-540-3337, 443-405-0099
Fax: 443-405-0119